



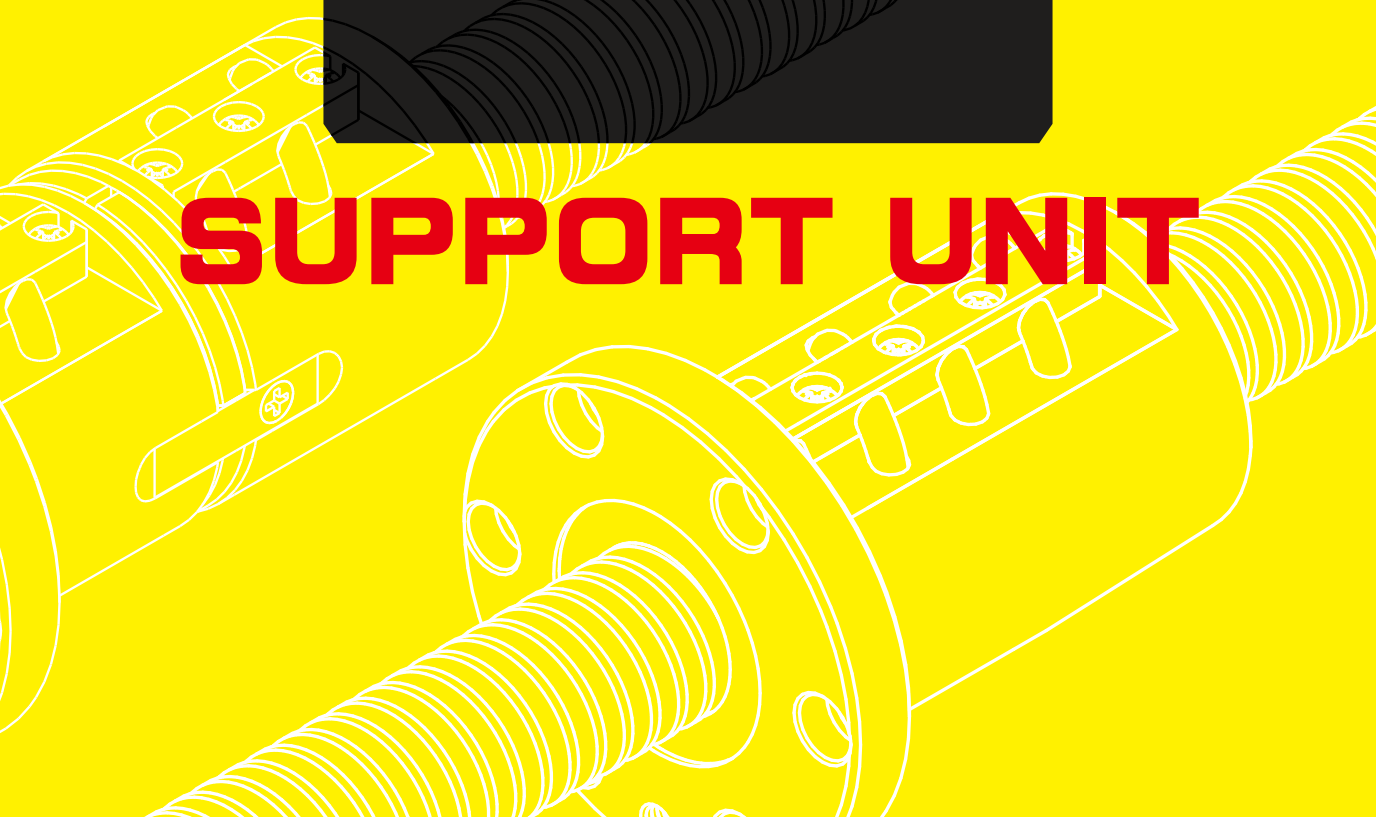
Made in Taiwan

螺桿支撐座

BALL SCREW SUPPORT UNIT



SUPPORT UNIT



支撐座各廠牌型號對照表

Ballscrew support unit equivalent interchangeable for major manufacturer

NSB	THK	NSB	THK	NSB	THK	NSB
BK10	BK10	EK06	EK6	FK06	FK6	AK10
BK12	BK12	EK08	EK8	FK08	FK8	AK12
BK15	BK15	EK10	EK10	FK10	FK10	AK15
BK17	BK17	EK12	EK12	FK12	FK12	AK20
BK20	BK20	EK15	EK15	FK15	FK15	AK25
BK25	BK25	EK20	EK20	FK17		
BK30	BK30			FK20	FK20	
BK35	BK35			FK25	FK25	
BK40	BK40			FK30	FK30	

NSB	THK	NSB	THK	NSB	THK	NSB
BF10	BF10	EF06	EF6	FF06	FK6	AF10
BF12	BF12	EF08	EF8	FF10	FK10	AF12
BF15	BF15	EF10	EF10	FF12	FF12	AF15
BF17	BF17	EF12	EF12	FF15	FF15	AF20
BF20	BF20	EF15	EF15	FF17		AF25
BF25	BF25	EF20	EF20	FF20	FF20	
BF30	BF30			FF25	FF25	
BF35	BF35			FF30	FF30	
BF40	BF40					

N-TYPE 表面處理Surface Treatment 無電解鍍 (防鏽處理)

小型機器輕荷重用 For compact ball screw

AK系列
(方形固定側)
Support Unit AK

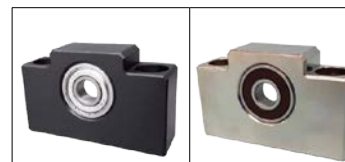


P04

AK 染黑

AK-N 無電解鍍

AF系列
(方形支撐側)
Support Unit AF



P05

AF 染黑

AF-N 無電解鍍

BK系列
(方形固定側)
Support Unit BK



P06

BK 染黑

BK-N 化鍍

BF系列
(方形支撐側)
Support Unit BF



P07

BF 染黑

BF-N 無電解鍍

EK系列
(凸形固定側)
Support Unit EK



P08

EK 染黑

EK-N 無電解鍍

小型機器輕荷重用 For compact ball screw

EF系列
(凸形支撐側)
Support Unit EF



P09

EF 染黑

EF-N 無電解鍍

FK系列
(法蘭形固定側)
Support Unit FK



P10

FK 染黑

FK-N 無電解鍍

FF系列
(法蘭形支撐側)
Support Unit FF



P11

FF 染黑

FF-N 無電解鍍

WBK-DF/DFD型
(高荷重支撐側)
WBK-DF/DFD type support Unit



P12

WBK-DF/DFD 染黑

WBK-DF/DFD-N 無電解鍍

建議軸端加工尺寸圖 P14~ P16

支撐座固定端軸向負荷參考表 P17

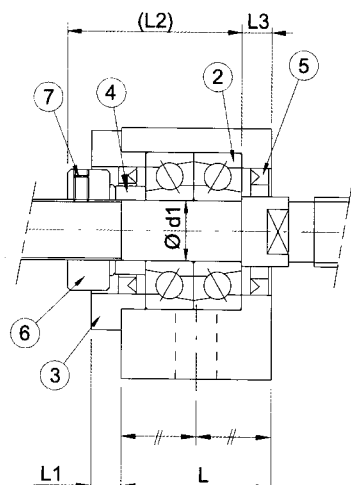
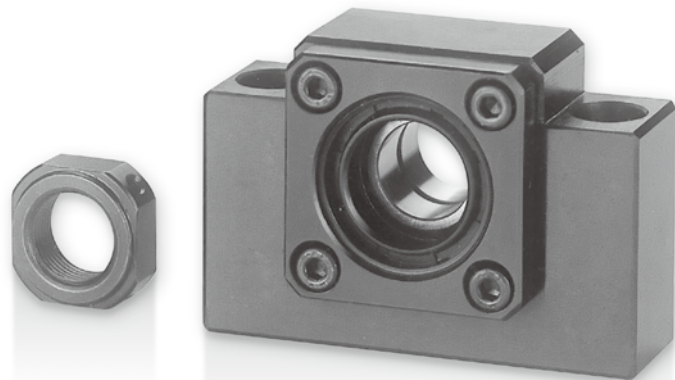
鎖固螺帽型號參考表 P18

安裝程序 P19

AK系列 (方形固定側)

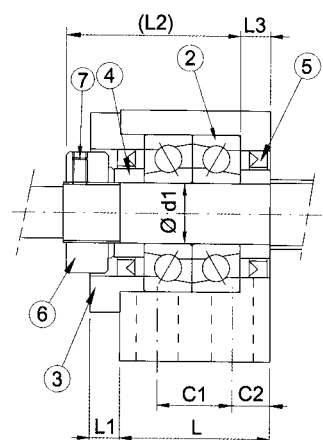
Support Unit AK
(fixed-side rectangular type)

AK

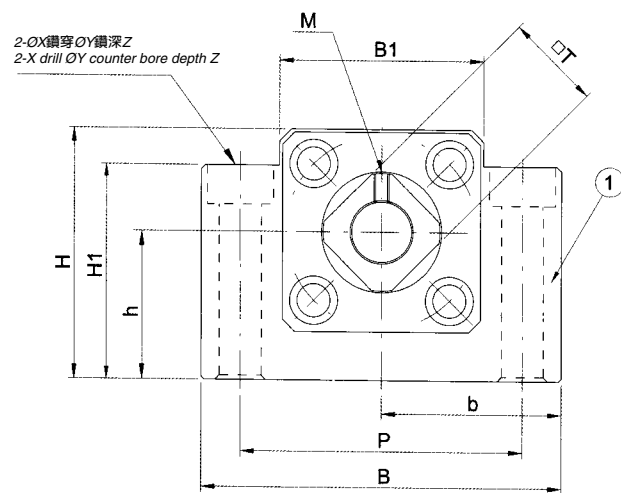


AK10 ~ AK15

編號/Part No.	部品名稱/Part name	數量/Qty
1	軸承座本體/Housing	1
2	軸承/Bearing	1組/1 set
3	壓板/Holding lid	1
4	套筒/Collar	2
5	油封/Seal	2
6	鎖固螺帽/Lock nut	1組/1 set
7	內六角止付螺絲附銅片 Hexagon socket-head Setscrew(with set piece)	2



AK20 ~ AK25



AK10 ~ AK25

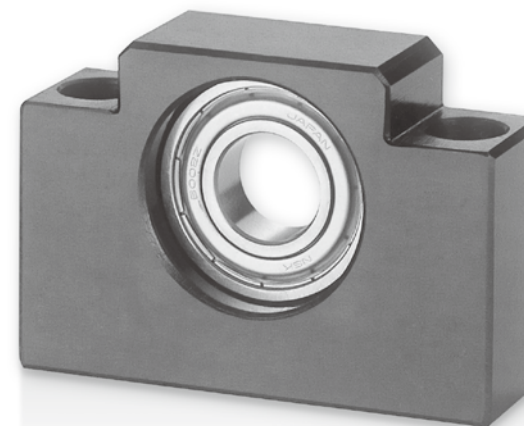
單位 / Unit : mm

型號 Model No.	軸徑 Shaft diameter d1	L	L1	L2	L3	B	H	b		h	B1	H1	P	X	Y	Z	M	T	C1	C2	
								±0.02	±0.02												
AK10	10	24	6	31.5	6	70	43	35	25	36	35	52	9	14	11	M4	16	-	-	-	-
AK12	12	24	6	31.5	6	70	43	35	25	36	35	52	9	14	11	M4	19	-	-	-	-
AK15	15	25	6	36	5	80	49	40	30	41	40	60	11	17	15	M4	22	-	-	-	-
AK20	20	42	10	50	10	95	58	47.5	30	56	45	75	11	17	15	M4	30	22	10	-	-
AK25	25	48	14	60	14	105	68	52.5	35	66	25	85	11	-	-	M5	35	30	9	-	-

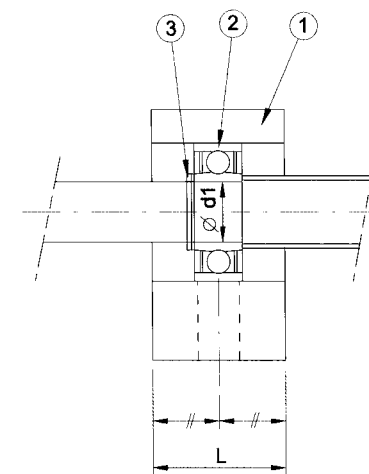
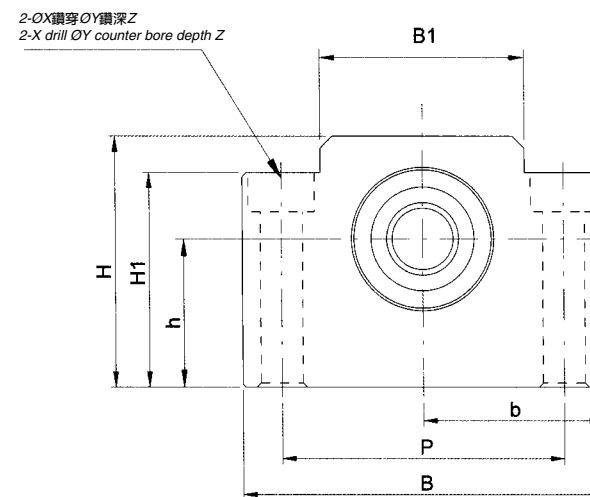
接受表面特殊處理之訂製 Surface Special treatment is available.

AF系列 (方形支撐側)

Support Unit AF
(Supported-side rectangular type)



AF



單位 / Unit : mm

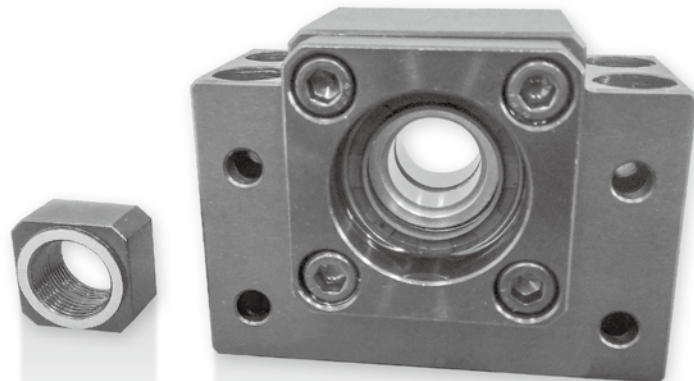
型號 Model No.	軸徑 Shaft diameter d1	L	B	H	b		h	B1	H1	P	X	Y	Z	使用軸承 Bearing	使用C型扣環 Snap ring
					±0.02	±0.02									
AF10	8	20	70	43	35	25	36	35	52	9	14	11	608ZZ	S 8	
AF12	10	20	70	43	35	25	36	35	52	9	14	11	6000ZZ	S 10	
AF15	15	20	80	49	40	30	41	40	60	9	14	11	6002ZZ	S 15	
AF20	20	26	95	58	47.5	30	56	45	75	11	17	15	6204ZZ	S 20	
AF25	25	30	105	68	52.5	35	66	25	85	11	-	-	6205ZZ	S 25	

接受表面特殊處理之訂製 Surface Special treatment is available.

BK系列 (方形固定側)

Support Unit BK
(fixed-side rectangular type)

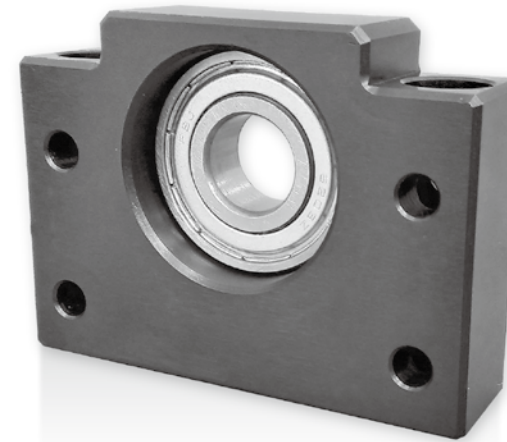
編號/Part No.	部品名稱/Part name	數量/Qty
1	軸承座本體/Housing	1
2	軸承/Bearing	1組/1 set
3	壓板/Holding lid	1
4	套筒/Collar	2
5	油封/Seal	2
6	鎖固螺帽/Lock nut	1組/1 set
7	內六角止付螺絲附銅片 Hexagon socket-head Setscrew(with set piece)	2



BF系列 (方形支撐側)

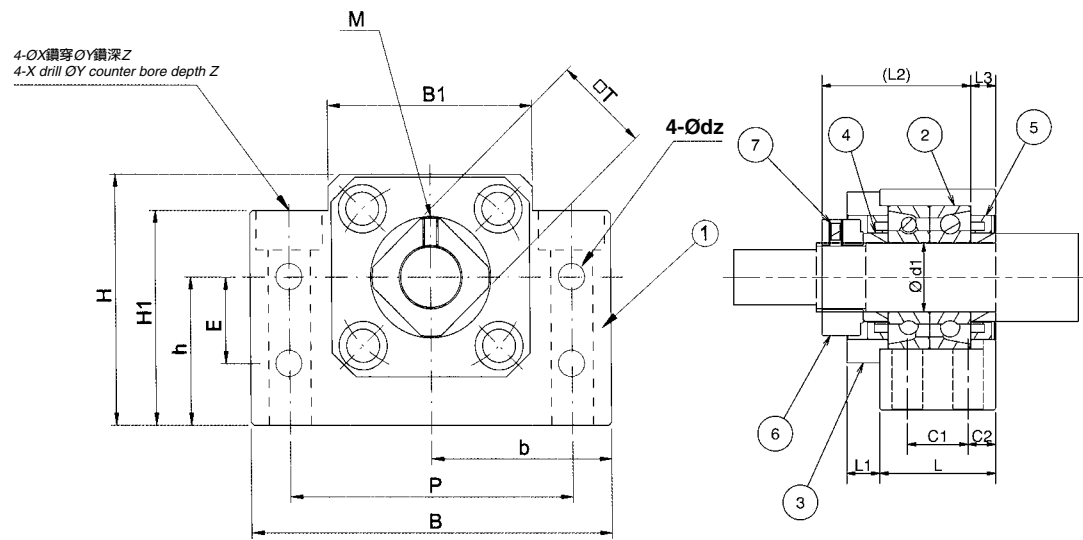
Support Unit BF
(Supported-side rectangular type)

編號/Part No.	部品名稱/Part name	數量/Qty
1	軸承座本體/Housing	1
2	軸承/Bearing	1組/1 set
3	C型扣環/Snap ring	1



螺桿支撐座

BK

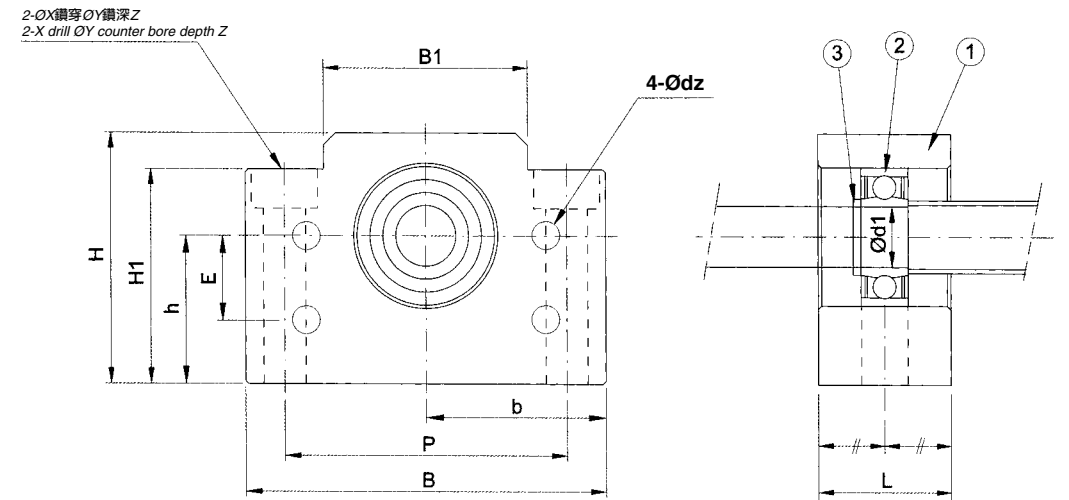


單位 / Unit : mm

型號 Model No.	軸徑 Shaft diameter d1	L	L1	L2	L3	B	H	b ±0.02	h ±0.02	B1	H1	P	C1	C2	X	Y	Z	M	T	E	dz
BK10	10	25	5	31.5	5	60	39	30	22	34	32.5	46	13	6	6.6	11	5	M4	16	15	5.5
BK12	12	25	5	31.5	5	60	43	30	25	34	32.5	46	13	6	6.6	11	1.5	M4	19	18	5.5
BK15	15	27	6	34	6	70	48	35	28	40	38	54	15	6	6.6	11	6.5	M4	22	18	5.5
BK17	17	35	9	44	7	86	64	43	39	50	55	68	19	8	9	14	8.5	M4	24	28	6.6
BK20	20	35	8	43	8	88	60	44	34	52	50	70	19	8	9	14	8.5	M4	30	22	6.6
BK25	25	42	12	54	9	106	80	53	48	64	70	85	22	10	11	17.5	11	M5	35	33	9
BK30	30	45	14	61	9	128	89	64	51	76	78	102	23	11	14	20	13	M6	40	33	11
BK35	35	50	14	67	12	140	96	70	52	88	79	114	26	11	14	20	13	M8	50	35	11
BK40	40	61	18	76	15	160	110	80	60	100	90	130	33	14	18	26	17	M8	50	37	14

接受表面特殊處理之訂製 Surface Special treatment is available.

BF



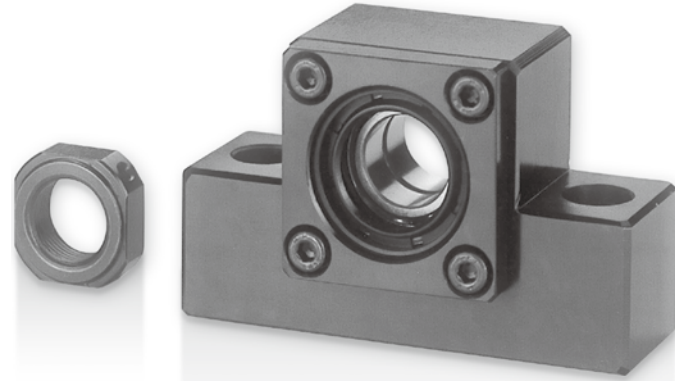
單位 / Unit : mm

型號 Model No.	軸徑 Shaft diameter d1	L	B	H	b ±0.02	h ±0.02	B1	H1	P	X	Y	Z	E	dz	使用軸承 Bearing	使用C型扣環 Snap ring
BF10	8	20	60	39	30	22	34	32.5	46	6.6	11	5	15	5.5	608ZZ	S 8
BF12	10	20	60	43	30	25	34	32.5	46	6.6	11	1.5	18	5.5	6000ZZ	S 10
BF15	15	20	70	48	35	28	40	38	54	6.6	11	6.5	18	5.5	6002ZZ	S 15
BF17	17	23	86	64	43	39	50	55	68	9	14	8.5	28	6.6	6203ZZ	S 17
BF20	20	26	88	60	44	34	52	50	70	9	14	8.5	22	6.6	6004ZZ	S 20
BF25	25	30	106	80	53	48	64	70	85	11	17.5	11	33	9	6205ZZ	S 25
BF30	30	32	128	89	64	51	76	78	102	14	20	13	33	11	6206ZZ	S 30
BF35	35	32	140	96	70	52	88	79	114	14	20	13	35	11	6207ZZ	S 35
BF40	40	37	160	110	80	60	100	90	130	18	26	17.5	37	14	6208ZZ	S 40

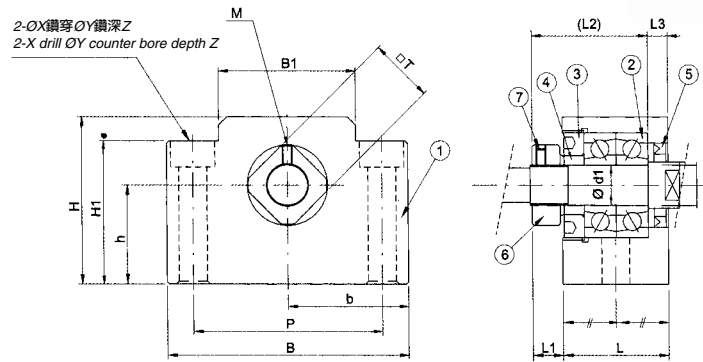
接受表面特殊處理之訂製 Surface Special treatment is available.

EK系列 (凸形固定側)

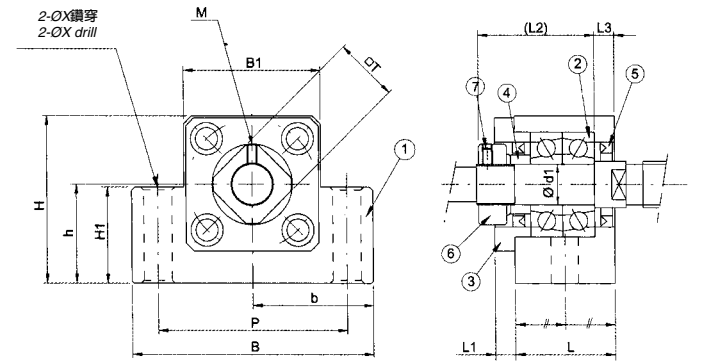
Support Unit EK
(fixed-side rectangular type)



EK



EK06 ~ EK08



EK10 ~ EK20

編號/Part No.	部品名稱/Part name	數量/Qty
1	軸承座本體/Housing	1
2	軸承/Bearing	1組/1 set
3	壓板/Holding lid	1
4	套筒/Collar	2
5	油封/Seal	1 (2)
6	鎖固螺帽/Lock nut	1
7	內六角止付螺絲附銅片 Hexagon socket-head Setscrew(with set piece)	2

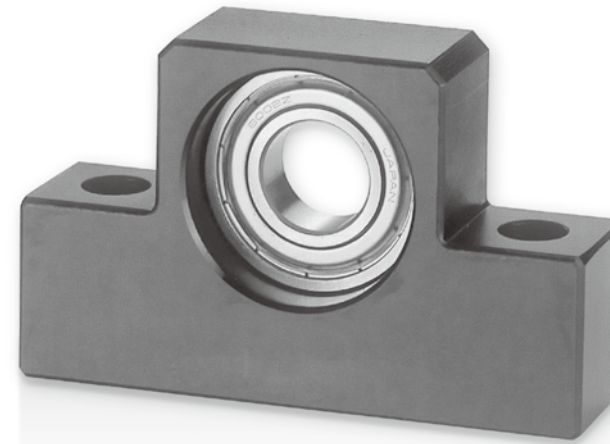
單位 / Unit : mm

型號 Model No.	軸徑 Shaft diameter d1	L	L1	L2	L3	B	H	b	h	B1	H1	P	X	Y	Z	M	T	C1	C2	
								±0.02	±0.02											
EK06	6	20	5.5	22	3.5	42	25	21	13	18	20	30	5.5	9.5	11	M3	12	-	-	
EK08	8	23	7	26	4	52	32	26	17	25	26	38	6.6	11	12	M3	14	-	-	
EK10	10	24	6	31.5	6	70	43	35	25	36	24	52	9	-	-	M4	16	-	-	
EK12	12	24	6	31.5	6	70	43	35	25	36	24	52	9	-	-	M4	19	-	-	
EK15	15	25	6	36	5	80	49	40	30	41	25	60	11	-	-	M4	22	-	-	
EK20	20	42	10	50	10	95	58	47.5	30	56	25	75	11	-	-	M4	30	-	-	

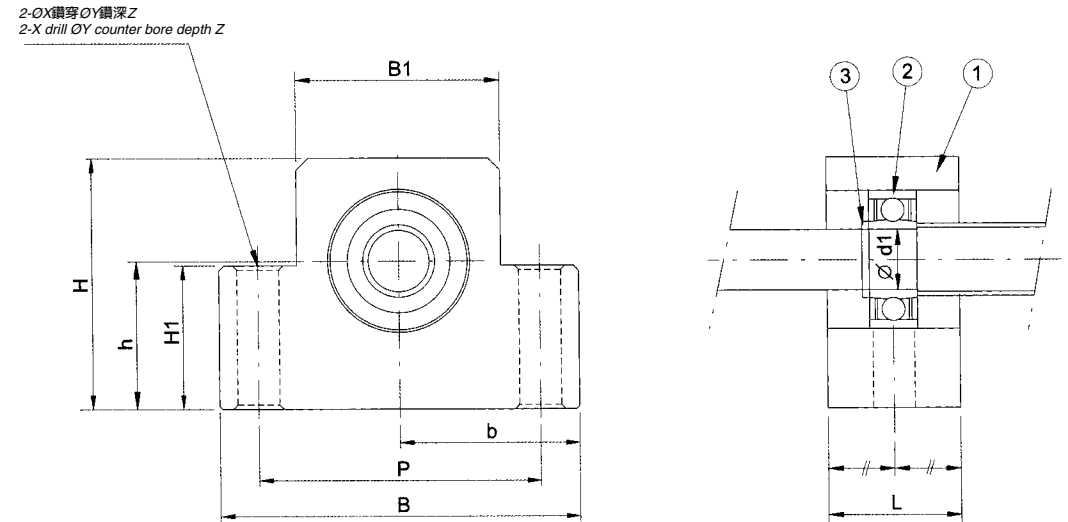
接受表面特殊處理之訂製 Surface Special treatment is available.

EF系列 (凸形支撐側)

Support Unit EF
(Supported-side rectangular type)



EF



單位 / Unit : mm

型號 Model No.	軸徑 Shaft diameter d1	L	B	H	b	h	B1	H1	P	X	Y	Z	使用軸承 Bearing	使用C型扣環 Snap ring
					±0.02	±0.02								
EF06	6	12	42	25	21	13	18	20	30	5.5	9.5	11	606ZZ	S 6
EF08	6	14	52	32	26	17	25	26	38	6.6	11	12	606ZZ	S 6
EF10	8	20	70	43	35	25	36	24	52	9	-	-	608ZZ	S 8
EF12	10	20	70	43	35	25	36	24	52	9	-	-	6000ZZ	S 10
EF15	15	20	80	49	40	30	41	25	60	9	-	-	6002ZZ	S 15
EF20	20	26	95	58	47.5	30	56	25	75	11	-	-	6204ZZ	S 20

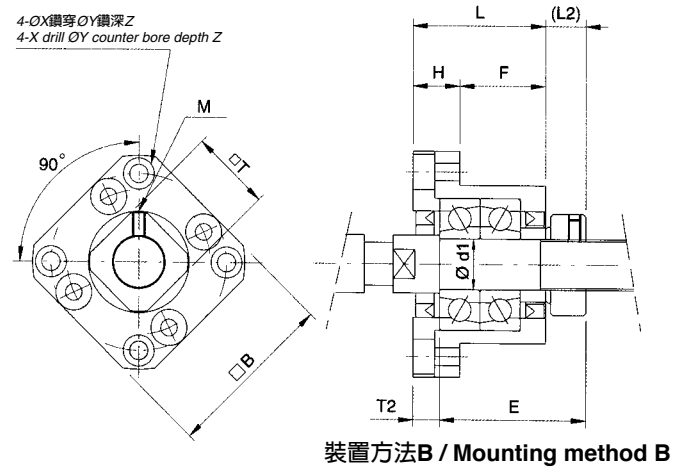
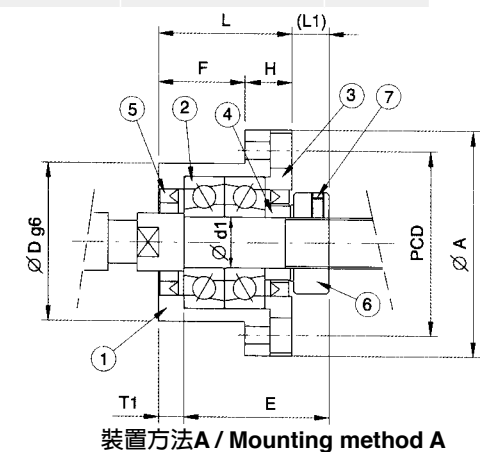
接受表面特殊處理之訂製 Surface Special treatment is available.

FK系列 (法蘭形固定側)

Support Unit FK
(fixed-side rectangular type)



編號/Part No.	部品名稱/Part name	數量/Qty
1	軸承座本體/Housing	1
2	軸承/Bearing	1組/1 set
3	壓板/Holding lid	1
4	套筒/Collar	2
5	油封/Seal	2
6	鎖固螺帽/Lock nut	1組/1 set
7	內六角止付螺絲附銅片 Hexagon socket-head Setscrew (with set piece)	2



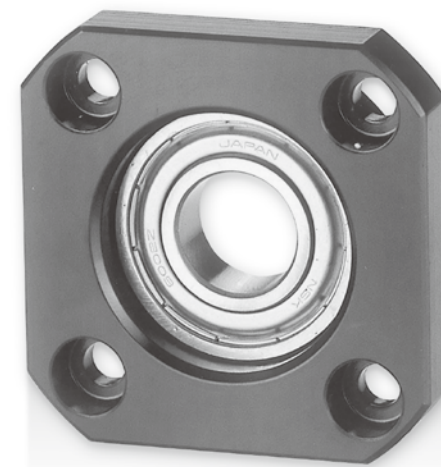
單位 / Unit : mm

型號 Model No.	軸徑 Shaft diameter d1	L	H	F	E	Dg6	A	PCD	B	裝置方法A Mounting method A		裝置方法B Mounting method B		X	Y	Z	M	T	
										L1	T1	L2	T2						
FK06	6	20	7	13	22	22	-0.007 -0.02	35	28	28	5.5	3.5	8.5	6.5	3.4	6	3	M3	12
FK08	8	23	9	14	26	28	-0.007 -0.02	43	35	35	7	4	8	5	3.4	6	4	M3	14
FK10	10	27	10	17	29.5	34	-0.009 -0.025	52	42	42	7.5	5	8.5	6	4.5	8	4	M4	16
FK12	12	27	10	17	29.5	36	-0.009 -0.025	54	44	44	7.5	5	8.5	6	4.5	8	4	M4	19
FK15	15	32	15	17	36	40	-0.009 -0.025	63	50	52	10	6	12	8	5.5	9.5	6	M4	22
FK17	17	45	22	23	47	50	-0.009 -0.025	77	62	61	11	9	14	12	6.6	11	10	M4	24
FK20	20	52	22	30	50	57	-0.010 -0.029	85	70	68	8	10	12	14	6.6	11	10	M4	30
FK25	25	57	27	30	60	63	-0.010 -0.029	98	80	79	13	10	20	17	9	14	13	M5	35
FK30	30	62	30	32	61	75	-0.010 -0.029	117	95	93	11	12	17	18	11	17	15	M6	40

接受表面特殊處理之訂製 Surface Special treatment is available.

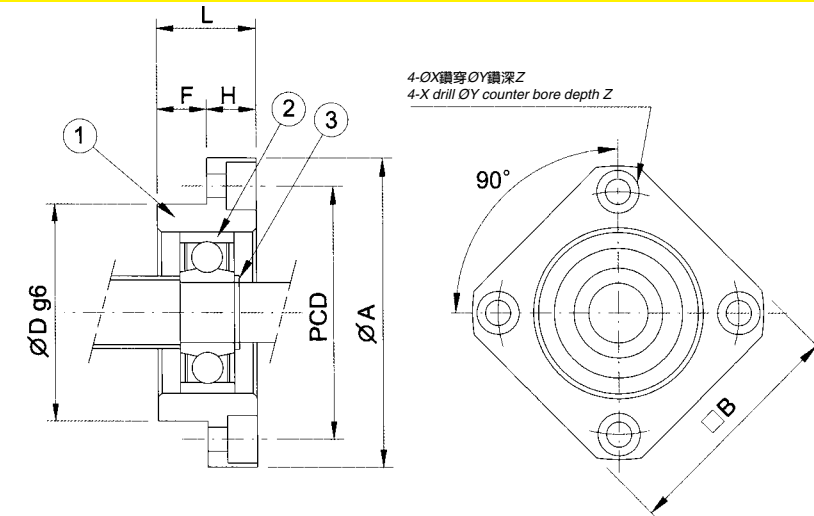
FF系列 (法蘭形支撐側)

Support Unit FF
(Supported-side round type)



編號/Part No.	部品名稱/Part name	數量/Qty
1	軸承座本體/Housing	1
2	軸承/Bearing	1組/1 set
3	C型扣環/Snap ring	1

FF

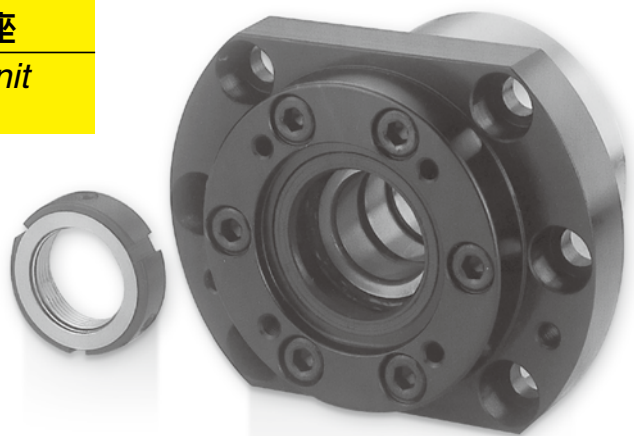


型號 Model No.	軸徑 Shaft diameter d1	L	H	F	Dg6	A	PCD	B	X	Y	Z	使用軸承 Bearing	使用C型扣環 Snap ring	
														FF06
FF10	8	12	7	5	28	-0.007 -0.02	43	35	35	3.4	6	4	608ZZ	S 8
FF12	10	15	7	8	34	-0.009 -0.025	52	42	42	4.5	8	4	6000ZZ	S 10
FF15	15	17	9	8	40	-0.009 -0.025	63	50	52	5.5	9.5	5.5	6002ZZ	S 15
FF17	17	20	11	9	50	-0.009 -0.025	77	62	61	6.6	11	6.5	6203ZZ	S 17
FF20	20	20	11	9	57	-0.010 -0.029	85	70	68	6.6	11	6.5	6204ZZ	S 20
FF25	25	24	14	10	63	-0.010 -0.029	98	80	79	9	14	8.5	6205ZZ	S 25
FF30	30	27	18	9	75	-0.010 -0.029	117	95	93	11	17.5	11	6206ZZ	S 30

接受表面特殊處理之訂製 Surface Special treatment is available.

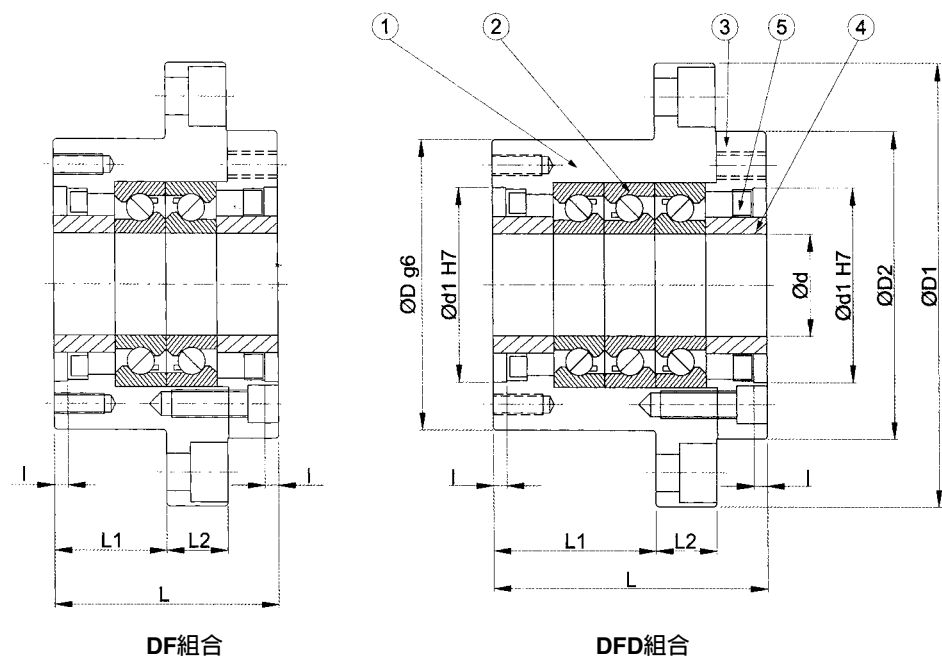
螺桿支撐座

WBK-DF/DFD型高荷重支撐座
WBK-DF/DFD type support Unit
 (heavy-load)



編號/Part No.	部品名稱/Part name	數量/Qty
1	軸承座本體/Housing	1
2	軸承/Bearing	1組/1 set
3	壓板/Holding lid	1
4	套筒/Collar	2
5	油封/Seal	2

WBK-DF/DFD

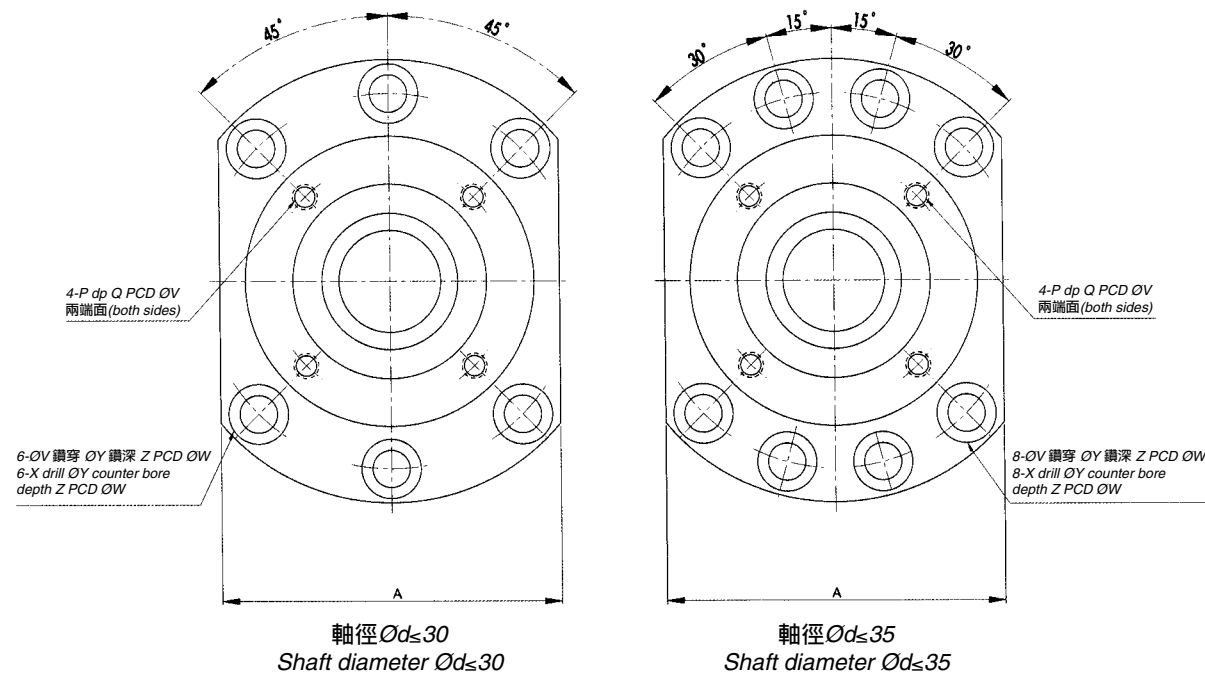


DF組合

DFD組合

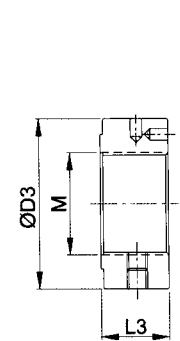
單位 / Unit : mm

型號 Model No.	d	D	D1	D2	L	L1	L2	A	W	X	Y	Z	d1	I	V	P	Q
WBK 20DF	20	70	106	72	60	32	15	80	88	9	14	8.5	45	3	58	M5	10
WBK 25DF	25	85	130	90	66	33	18	100	110	11	17.5	11	57	4	70	M6	12
WBK 25DFD	25	85	130	90	81	48	18	100	110	11	17.5	11	57	4	70	M6	12
WBK 30DF	30	85	130	90	66	33	18	100	110	11	17.5	11	57	4	70	M6	12
WBK 30DFD	30	85	130	90	81	48	18	100	110	11	17.5	11	57	4	70	M6	12
WBK 35DF	35	95	142	102	66	33	18	106	121	11	17.5	11	69	4	80	M6	12
WBK 35DFD	35	95	142	102	81	48	18	106	121	11	17.5	11	69	4	80	M6	12
WBK 40DF	40	95	142	102	66	33	18	106	121	11	17.5	11	68	4	80	M6	12
WBK 40DFD	40	95	142	102	81	48	18	106	121	11	17.5	11	68	4	80	M6	12

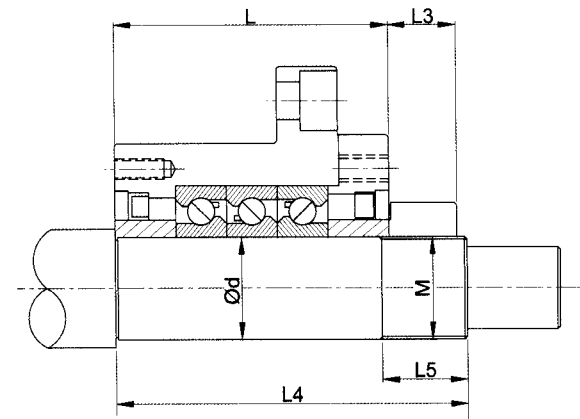


軸徑 $\text{Ø}d \leq 30$
 Shaft diameter $\text{Ø}d \leq 30$

軸徑 $\text{Ø}d \leq 35$
 Shaft diameter $\text{Ø}d \leq 35$



鎖固螺帽
 Lock nut

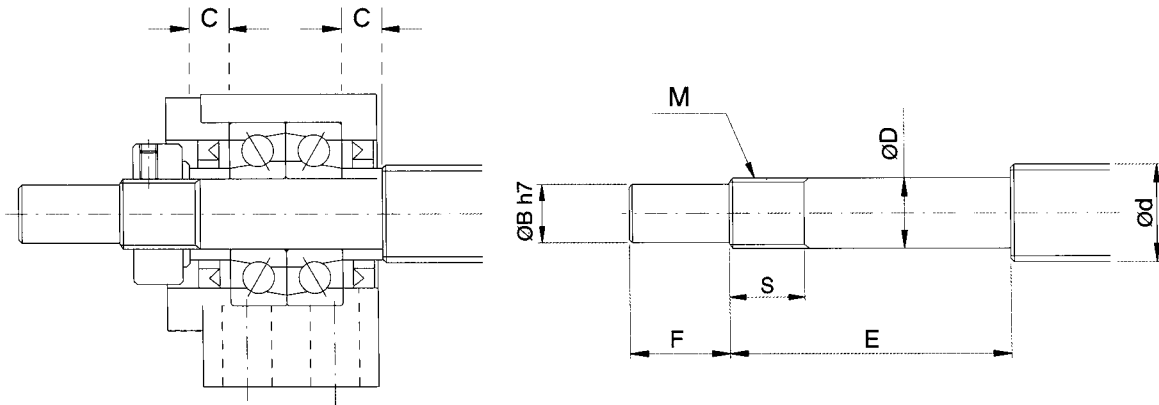


軸端尺寸
 Dimensions of shaft end

單位 / Unit : mm

型號 Model No.	基本動定格荷重 Basic dynamic load rating Ca(kgf)	界限荷重 Permissible axial load (N)	預壓荷重 Preload (N)	軸方向剛性 Axial rigidity (N/um)	起動力矩 Starting torque (N·cm)	鎖固螺帽 Lock nut			重量 Weight Kgs	軸端尺寸 Dimensions of shaft end		
						M	D3	L3		d	L4	L5
WBK 20DF	21900	26600	2150	750	14.0	M20x1	40	18	1.9	20	81	23
WBK 25DF	28500	40500	3150	1000	23.0	M25x1.5	45	20	3.1	25	89	26
WBK 25DFD	46500	81500	4300	1470	31.0	M25x1.5	45	20	3.4	25	104	26
WBK 30DF	29200	43000	3350	1030	24.0	M30x1.5	50	20	3.0	30	89	26
WBK 30DFD	47500	86000	4500	1520	33.0	M30x1.5	50	20	3.3	30	104	26
WBK 35DF	31000	50000	3800	1180	28.0	M35x1.5	55	22	3.4	35	92	30
WBK 35DFD	50500	100000	5200	1710	37.0	M35x1.5	55	22	4.3	35	107	30
WBK 40DF	31500	52000	3900	1230	28.0	M40x1.5	60	22	3.6	40	92	30
WBK 40DFD	51500	104000	5300	1810	38.0	M40x1.5	60	22	4.2	40	107	30

建議軸端加工尺寸 (固定側) BK型
Recommended shaft end shape(Fixed-side)
for Support Units types

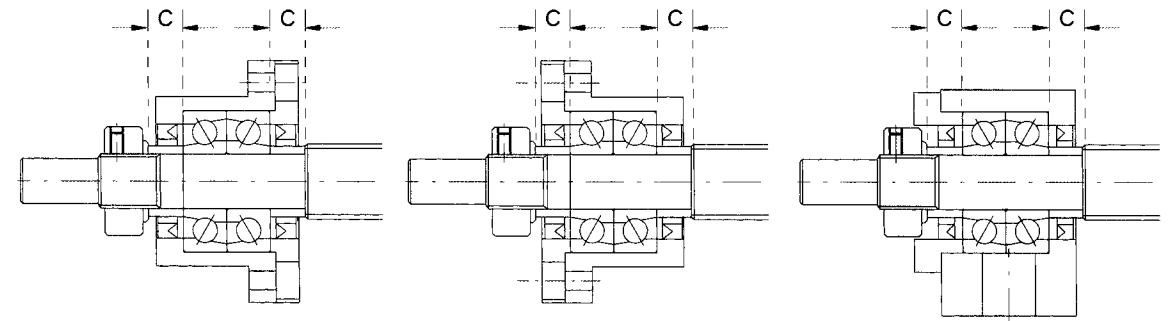
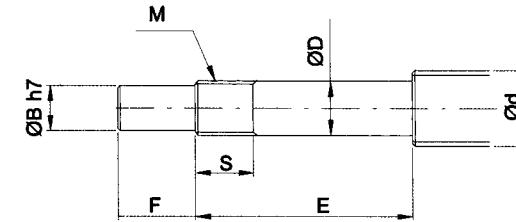


BK型
Type BK

單位 / Unit : mm

型號 Support unit model No.	滾珠螺桿軸外徑 Ballscrew shaft OD	軸端部外徑 Shaft support portion OD			公稱螺紋 Metric screw thread		套筒長度 Metric screw thread		
BK型 Type BK	d	B	E	F	M	S	C		
BK10	12/14/15	10	-0.005 -0.012	8	36	15	M10X1	16	5.5
BK12	14/15/16	12	-0.005 -0.012	10	36	15	M12X1	14	5.5
BK15	18/20	15	-0.005 -0.012	12	40	20	M15X1	12	6
BK17	20/25	17	-0.005 -0.014	15	53	23	M17X1	17	7
BK20	25/28	20	-0.005 -0.014	17	53	25	M20X1	15	8
BK25	32/36	25	-0.005 -0.014	20	65	30	M25X1.5	18	9
BK30	36/40	30	-0.005 -0.015	25	72	38	M30X1.5	25	9
BK35	45	35	-0.005 -0.015	30	81	45	M35X1.5	28	12
BK40	50	40	-0.005 -0.015	35	93	50	M40X1.5	35	15

建議軸端加工尺寸 (固定側) FK,EK,AK型
Recommended shaft end shape(Fixed-side)
for Support Units types FK,EK,AK



FK型
Type FK

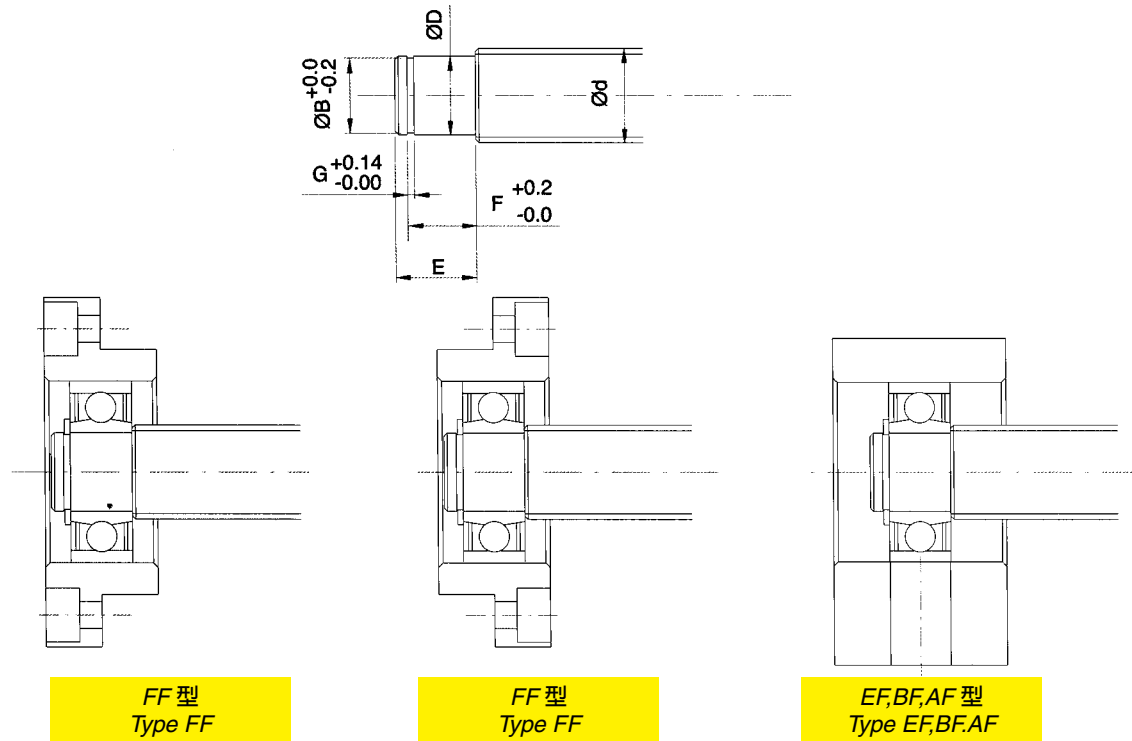
FK型
Type FK

EK,AK型
Type EK,AK

單位 / Unit : mm

型號 Support unit model No.			滾珠螺桿軸外徑 Ballscrew shaft OD	軸端部外徑 Shaft support portion OD			公稱螺紋 Metric screw thread		套筒長度 Metric screw thread		
FK型 Type FK	EK型 Type EK	AK型 Type AK	d	B	E	F	M	S	C		
FK06	EK06	-	8	6	-0.005 -0.012	4	28	8	M6X0.75	8	5
FK08	EK08	-	10/12	8	-0.005 -0.012	6	32	9	M8X1	10	5.5
FK10	EK10	AK10	12/14/15	10	-0.005 -0.012	8	36	15	M10X1	11	5.5
FK12	EK12	AK12	14/15/16	12	-0.005 -0.014	10	36	15	M12X1	11	5.5
FK15	EK15	AK15	18/20	15	-0.005 -0.014	12	47	20	M15X1	13	10
FK17	-	-	20/25	17	-0.005 -0.014	15	58	23	M17X1	15	10
FK20	EK20	AK20	25/28/30	20	-0.005 -0.014	17	62	25	M20X1	17	11
FK25	-	AK25	30/32/36	25	-0.005 -0.014	20	76	30	M25X1.5	20	15
FK30	-	-	36/40	30	-0.005 -0.015	25	72	38	M30X1.5	25	9

建議軸端加工尺寸 (固定側) FF,EF,BF,AF型
Recommended shaft end shape(Fixed-side)
for Support Units types FF,EF,BF,AF



單位 / Unit : mm

型號 Support unit model No.				滾珠螺桿軸外徑 Ball screw shaft OD	軸端部外徑 Shaft support portion OD					
FF型 Type FF	EF型 Type EF	BF型 Type BF	AF型 Type AF	d	D		E	B	F	G
FF06	EF06	-	-	8	6	-0.005 -0.012	9	5.7	6.8	0.8
-	EF08	-	-	10	6	-0.005 -0.012	9	5.7	6.8	0.8
FF10	EF10	BF10	AF10	12/14/15	8	-0.005 -0.012	10	7.6	7.9	0.9
FF12	EF12	BF12	AF12	14/15/16	10	-0.005 -0.012	11	9.6	9.15	1.15
FF15	EF15	BF15	AF15	18/20	15	-0.005 -0.014	13	14.3	10.15	1.15
FF17	-	BF17	-	20/25	17	-0.005 -0.014	16	16.2	13.15	1.15
FF20	EF20	(BF20)Note	AF20	25/28/30	20	-0.005 -0.014	19(16)	19	15.35(13.35)	1.35
FF25	-	BF25	AF25	30/32/36	25	-0.005 -0.014	20	23.9	16.35	1.35
FF30	-	BF30	-	36/40	30	-0.005 -0.015	21	28.6	17.75	1.75
-	-	BF35	-	40/45	35	-0.005 -0.015	22	33	18.75	1.75
-	-	BF40	-	50	40	-0.005 -0.015	23	38	19.75	1.95

支撐座固定端軸向負荷參考表

Reference of Axial load of fixed-side type support units

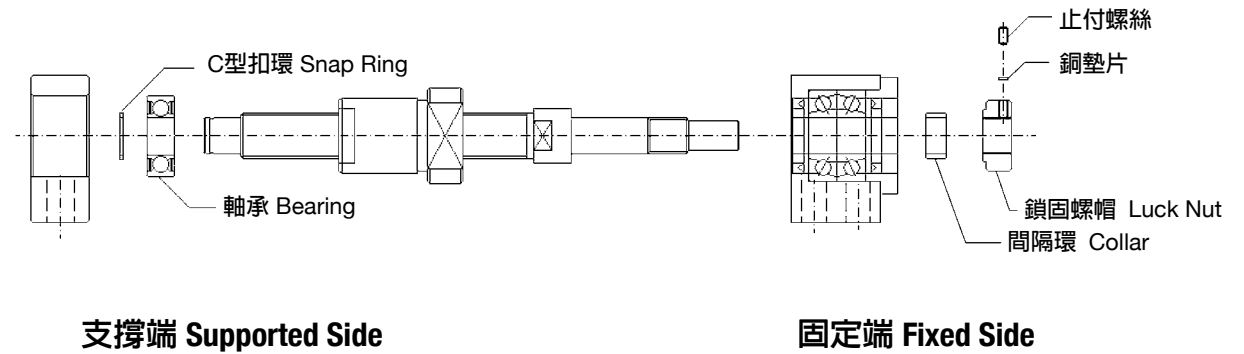
支撐座型號 Model No.		軸承 Bearing	靜負荷 Static load (Kgf)	軸向負荷 Attowable Axial load (Kgf)	極限轉速 Lirriting Rpm (RPM)
FK06	EK06	706C	93	74	
FK08	EK08	708A	129	103	
BK10	AK10	7000A	239	195	27105
FK10	EK10				
BK12	AK12	7001A	276	217	24375
FK12	EK12				
BK15	AK15	7002A	321	240	20800
FK15	EK15				
BK17	FK17	7203A	556	413	17160
		7203B	523	490	11798
BK20		7004A	622	428	15730
	AK20	7204A	770	587	14560
FK20	EK20	7204B	710	691	10625
BK25	AK25	7205A	964	709	12675
FK25		7205B	881	820	8980
BK30	FK30	7206A	1388	939	10660
		7206B	1268	1082	7570
BK35		7207B	1714	1466	6400
BK40		7208B	2145	1834	5700

鎖固螺帽型號參考表
Reference of Lock nut type

編號 Order Coding	型號 Model No.	表面處理 Surface treatment	鎖緊扭矩 MAX Torque (kgf-cm)	防鬆扭矩 Setscrew MAX Torque (kgf-cm)
RK06	M6*P0.75	染黑 Black Oxide	25	6(M3)
RK06_N		化學鍍 Electroless Nickel Plating		
RK08	M8*P1.0	染黑 Black Oxide	50	6(M3)
RK08_N		化學鍍 Electroless Nickel Plating		
RK10	M10*P1.0	染黑 Black Oxide	95	6(M4)
RK10_N		化學鍍 Electroless Nickel Plating		
RK12	M12*P1.0	染黑 Black Oxide	140	15(M4)
RK12_N		化學鍍 Electroless Nickel Plating		
RK15	M15*P1.0	染黑 Black Oxide	240	15(M4)
RK15_N		化學鍍 Electroless Nickel Plating		
RK17	M17*P1.0	染黑 Black Oxide	315	15(M4)
RK17_N		化學鍍 Electroless Nickel Plating		
RK20	M20*P1.0	染黑 Black Oxide	480	15(M4)
RK20_N		化學鍍 Electroless Nickel Plating		
RK25	M25*P1.5	染黑 Black Oxide	860	50(M6)
RK25_N		化學鍍 Electroless Nickel Plating		
RK30	M30*P1.5	染黑 Black Oxide	1280	50(M6)
RK30_N		化學鍍 Electroless Nickel Plating		
RK40	M40*P1.5	染黑 Black Oxide	3000	50(M6)
RK40_N		化學鍍 Electroless Nickel Plating		

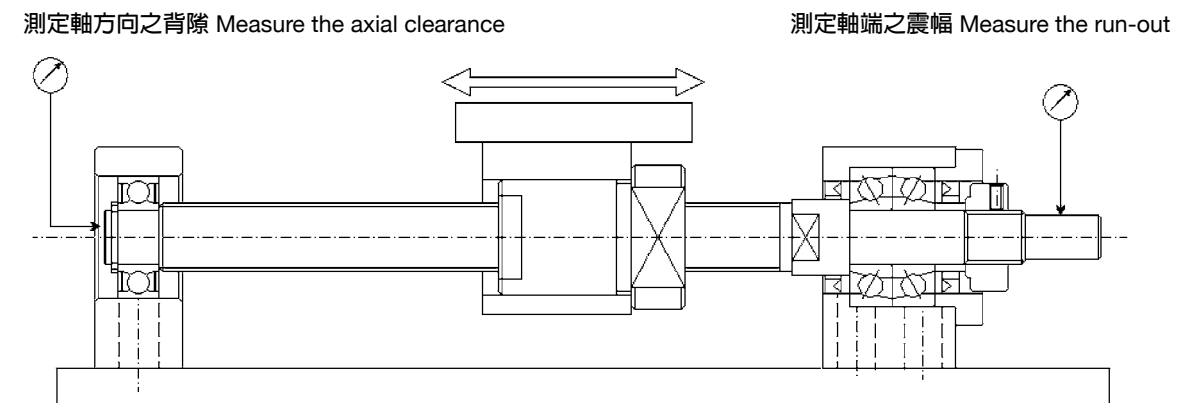
安裝程序

- ◆將固定端支撐座與滾珠螺桿組合。
 - 請勿拆解支撐座
 - 裝入螺桿時請勿刮破軸封
- ◆螺桿置入固定端支撐座後，鎖固螺帽之銅墊片請務必墊上，並用內六角止付螺絲鎖上。
 - 在固定前先將銅墊片置入鎖固螺帽內，並以耐落膠防止鬆落
 - 若在特殊環境下，請與我們連絡
- ◆將支撐端軸承與螺桿軸端組合，並以C型扣環固定，再將其置入支撐端支撐座內。



確認精度

- ◆量測滾珠螺桿固定端軸端處迴轉精度。
 - 滾珠螺桿軸端之震幅
- ◆量測支撐端軸端軸向背隙。
 - 軸方向之背隙





Made in Taiwan

螺桿支撐座

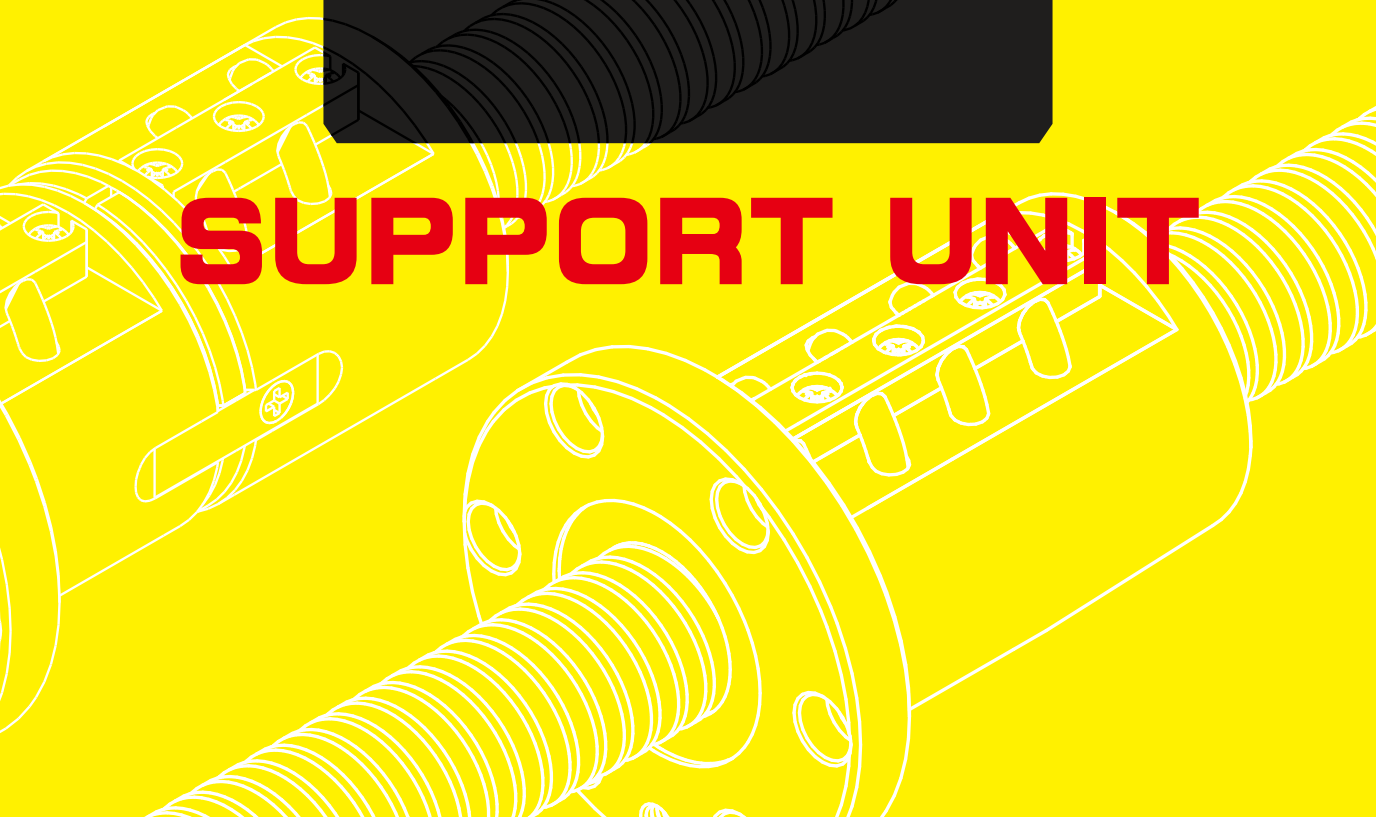
BALL SCREW SUPPORT UNIT

經濟型

ECONOMY TYPE



SUPPORT UNIT



AKE 系列 (經濟方型固定側)

Support Unit AKE
(fixed-side rectangular economy type)

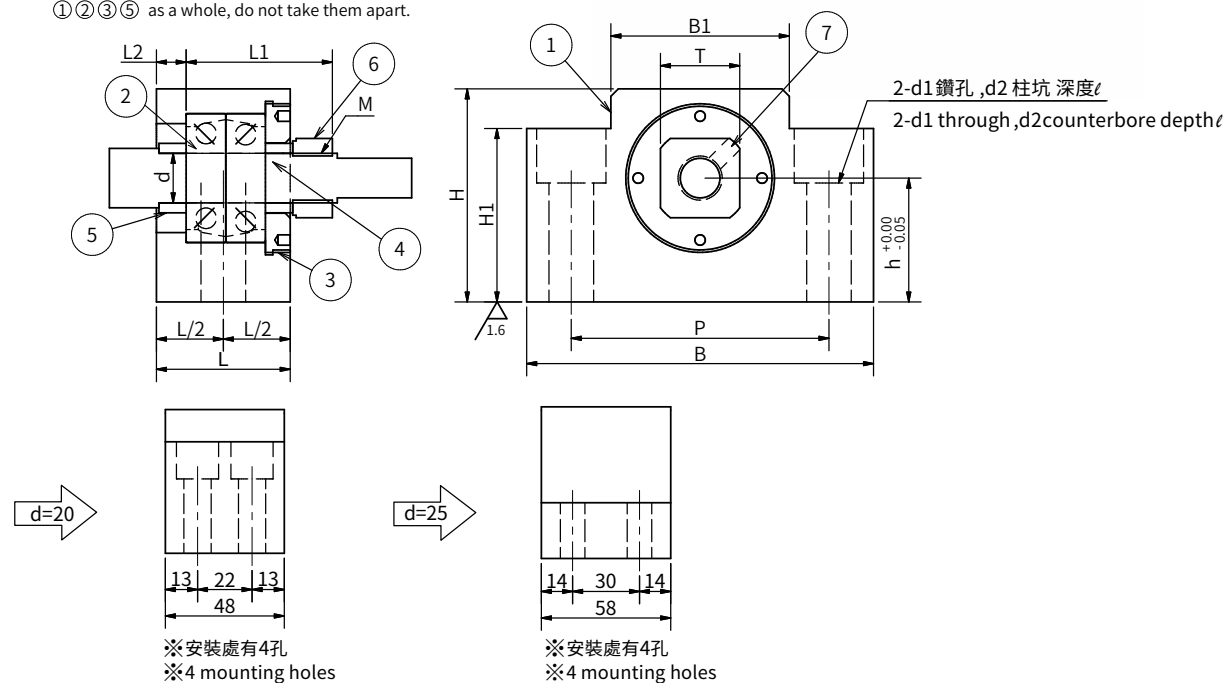
※轉造級滾珠螺桿適用
Rolled ball screws are suitable for use.
※全系列使用角接觸軸承 P5等級
All series adopts angular contact bearings,
with JIS class 5 type.



編號/Part No.	部品名稱/Part name	數量/Qty
1	軸承座本體/Housing	1
2	角接觸軸承/Bearing	1組/1 set
3	螺柱壓板/Screw Holding Lid	1
4	套筒/Collar	2
5	油封/Seal	1
6	鎖固螺帽/Lock nut	1組/1 set
7	內六角止付螺絲附銅片 Hexagon socket-head Setscrew(with set piece)	1

AKE

※ ①②③⑤ 是一體的，請勿將其分解。
①②③⑤ as a whole, do not take them apart.



單位/Unit : mm

型號 Model No.	軸徑 Shaft diameter d1	L	L1	L2	B	H	h	B1	H1	P	d1	d2	ℓ	M (細螺紋)	T
AKE10	10	27	29.5	6	70	43	25	36	35	52	9	14	11	M10x1.0	17
AKE12	12	27	29.5	6	70	43	25	36	35	52	9	14	11	M12x1.0	19
AKE15	15	29	38	5	80	52	30	41	40	60	11	17	15	M15x1.0	22
AKE20	20	48	52	10	95	58	30	56	45	75	11	17	15	M20x1.0	30
AKE25	25	58	59	14	105	68	35	66	25	85	11	-	-	M25x1.5	35

接受表面特殊處理之訂製 Surface Special treatment is available.

FKE 系列 (經濟法蘭型固定側)

Support Unit FKE
(fixed-side rectangular economy type)

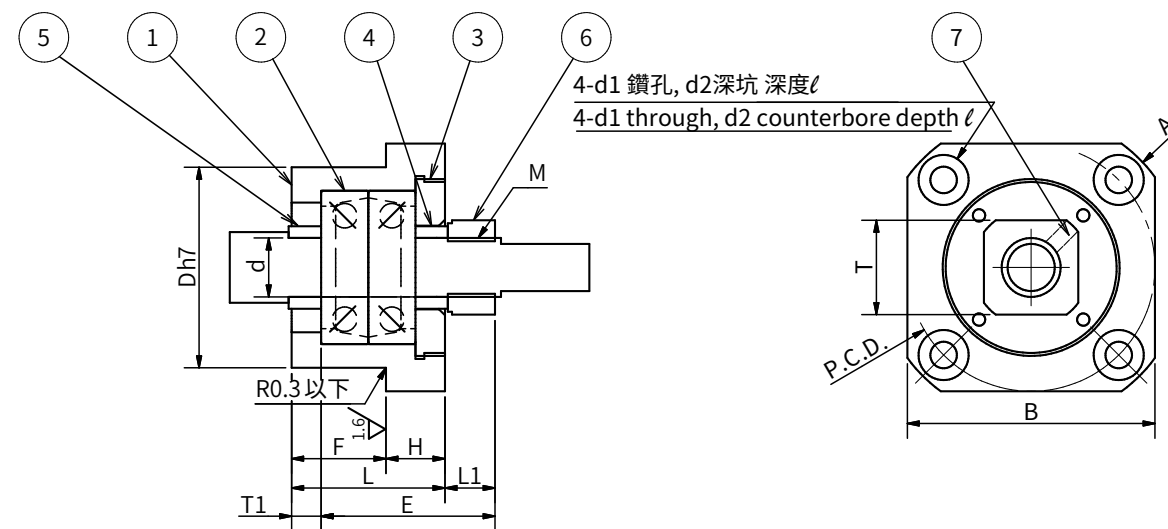
※轉造級滾珠螺桿適用
Rolled ball screws are suitable for use.
※全系列使用角接觸軸承 P5等級
All series adopts angular contact bearings,
with JIS class 5 type.



編號/Part No.	部品名稱/Part name	數量/Qty
1	軸承座本體/Housing	1
2	角接觸軸承/Bearing	1組/1 set
3	螺柱壓板/Screw Holding Lid	1
4	套筒/Collar	2
5	油封/Seal	1
6	鎖固螺帽/Lock nut	1組/1 set
7	內六角止付螺絲附銅片 Hexagon socket-head Setscrew(with set piece)	1

FKE

※ ①②③⑤ 是一體的，請勿將其分解。
①②③⑤ as a whole, do not take them apart.

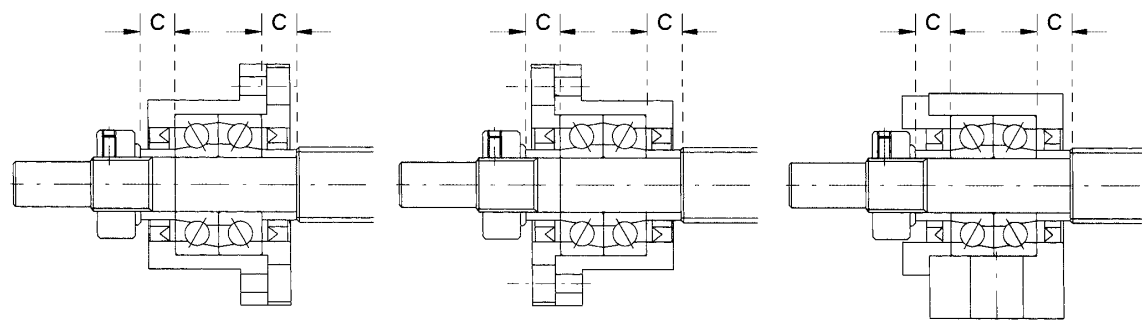
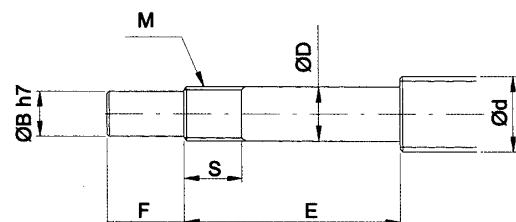


型號 Model No.	軸徑 Shaft diameter d1	L	H	F	E	Dh7	A	PCD	B	L1	T1	d1	d2	ℓ	M (細螺紋)	T
FKE10	10	26	10	16	29.5	34	52	42	42	8.5	5	4.5	8	4.5	M10x1.0	17
FKE12	12	26	10	16	29.5	36	54	44	44	8.5	5	4.5	8	4.5	M12x1.0	19
FKE15	15	30	13	17	38	40	63	50	52	14	6	5.5	9.5	5.5	M15x1.0	22
FKE20	20	48	18	30	52	57	85	70	68	14	10	6.6	11	6.5	M20x1.0	30
FKE25	25	54	24	30	59	63	98	80	79	15	10	9	15	8.5	M25x1.5	35

接受表面特殊處理之訂製 Surface Special treatment is available.

建議軸端加工尺寸 (固定側) FK,FKE,FKZ,EK,AK,AKE,AKZ 型

Recommended shaft end shape(Fixed-side)
for Support Units types FK,FKE,FKZ,EK,AK,AKE,AKZ



FK,FKE,FKZ 型
Type FK,FKE,FKZ

FK,FKE,FKZ 型
Type FK,FKE,FKZ

EK,AK,AKE,AKZ 型
Type EK,AK,AKE,AKZ

單位 / Unit : mm

型號 Support unit model No.							滾珠螺桿軸外徑 Ballscrew shaft OD	軸端部外徑 Shaft support portion OD			公稱螺紋 Metric screw thread		套筒長度 Metric screw thread		
FK型 Type FK	FKE型 Type FKE	FKZ型 Type FKZ	EK型 Type EKE	AK型 Type AK	AKE型 Type AKE	AKZ型 Type AKZ	d	D	B	E	F	M	S	C	
FK06	-	FKZ06	EK06	-	-	AKZ06	8	6	-0.005 -0.012	4	28	8	M6X0.75	8	5
FK08	-	FKZ08	EK08	-	-	AKZ08	10/12	8	-0.005 -0.012	6	32	9	M8X1	10	5.5
FK10	FKE10	FKZ10	EK10	AK10	AKE10	AKZ10	12/14/15	10	-0.005 -0.012	8	36	15	M10X1	11	5.5
FK12	FKE12	FKZ12	EK12	AK12	AKE12	AKZ12	14/15/16	12	-0.005 -0.014	10	36	15	M12X1	11	5.5
FK15	FKE15	FKZ15	EK15	AK15	AKE15	AKZ15	18/20	15	-0.005 -0.014	12	47	20	M15X1	13	10
FK17	-	-	-	-	-	-	20/25	17	-0.005 -0.014	15	58	23	M17X1	15	10
FK20	FKE20	FKZ20	EK20	AK20	AKE20	AKZ20	25/28/30	20	-0.005 -0.014	17	62	25	M20X1	17	11
FK25	FKE25	FKZ25	-	AK25	AKE25	AKZ25	30/32/36	25	-0.005 -0.014	20	76	30	M25X1.5	20	15
FK30	-	-	-	-	-	-	36/40	30	-0.005 -0.015	25	72	38	M30X1.5	25	9

經濟型-支撐座固定端軸向負荷參考表

Reference of Axial load of fixed-side type support units

支撐座型號 Model No.		軸承 Bearing	基本額定負荷(N) Basic load ratings		極限轉速 Limiting Rpm (RPM)
			動額定負荷 Dynamic(N)	靜額定負荷 Static(N)	
AKE10	FKE10	7000ADFC8P5	7500	4100	27000
AKE12	FKE12	7001ADFC8P5	8000	4500	24000
AKE15	FKE15	7002ADFC8P5	9000	6000	20800
AKE20	FKE20	7204BDFC8P5	23000	16000	10600
AKE25	FKE25	7205BCFC8P5	26000	20000	8900



Made in Taiwan

螺桿支撐座

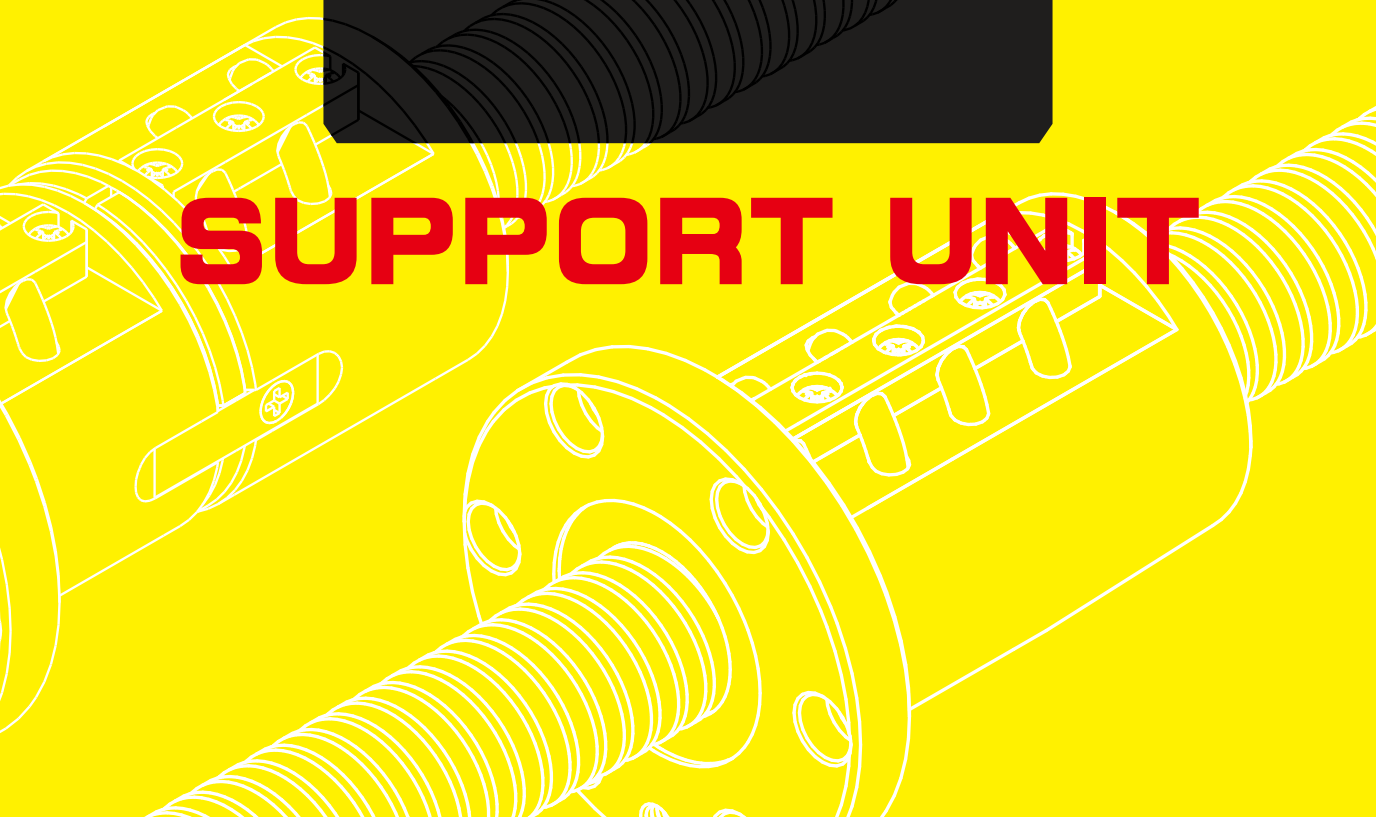
BALL SCREW SUPPORT UNIT

低轉速-徑向軸承型

LOW SPEED - RADIAL BEARINGS TYPE



SUPPORT UNIT



AKZ 系列 (凸形固定側徑向軸承型)
Support Unit AKZ
 (fixed-side rectangular radial bearings type)

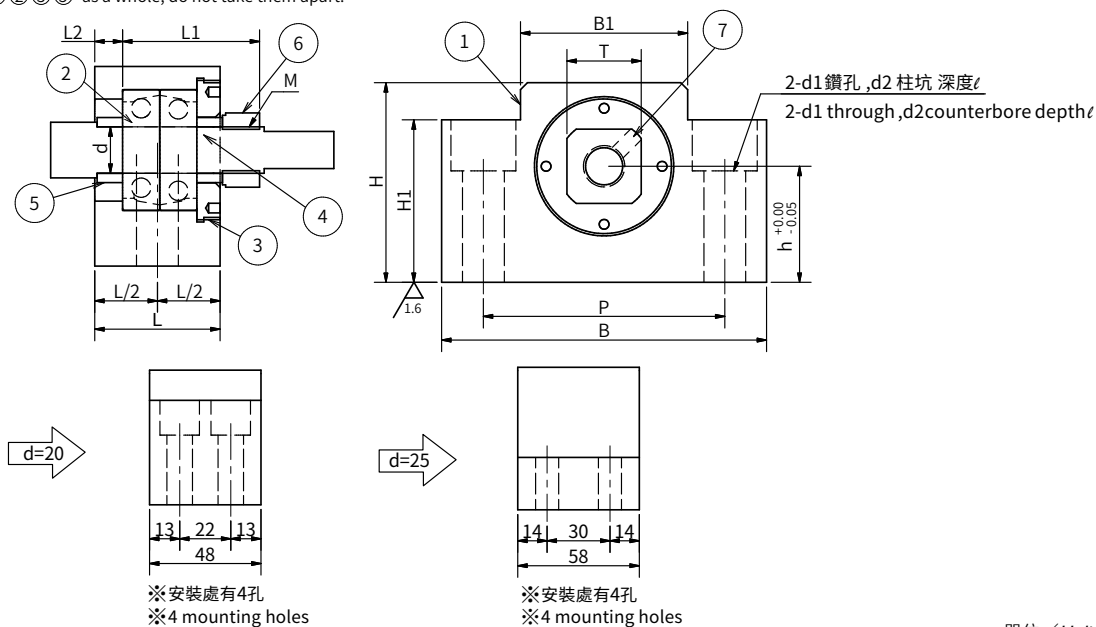
- ※轉造級滾珠螺桿適用
Rolled ball screws are suitable for use.
- ※全系列使用徑向軸承
All series adopts radial bearings.
- ※軸承已施加過預壓，轉速3000rpm以內使用
Max. 3,000 r.p.m with preload bearings.

編號/Part No.	部品名稱/Part name	數量/Qty
1	軸承座本體/Housing	1
2	徑向軸承/Bearing	1組/1 set
3	螺柱壓板/Screw Holding Lid	1
4	套筒/Collar	2
5	油封/Seal	1
6	鎖固螺帽/Lock nut	1組/1 set
7	內六角止付螺絲附銅片 Hexagon socket-head Setscrew(with set piece)	1



AKZ

※ ①②③⑤ 是一體的，請勿將其分解。
 ①②③⑤ as a whole, do not take them apart.



單位 / Unit : mm

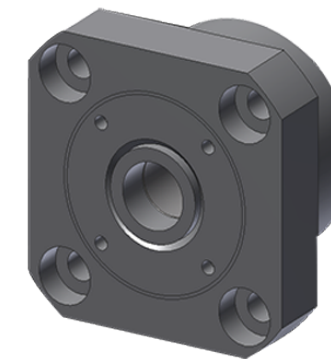
型號 Model No.	軸徑 Shaft diameter d1	L	L1	L2	B 0~0.1	H	h 0~-0.05	B1	H1	P	d1	d2	ℓ	M (細螺紋)	T
AKZ06	6	20	22.5	3.5	42	25	13	18	20	30	5.5	9.5	11	M6x0.75	12
AKZ08	8	23	26	4	52	32	17	25	26	38	6.6	11	11	M8x1.0	14
AKZ10	10	27	29.5	6	70	43	25	36	35	52	9	14	11	M10x1.0	17
AKZ12	12	27	29.5	6	70	43	25	36	35	52	9	14	11	M12x1.0	19
AKZ15	15	29	38	5	80	52	30	41	40	60	11	17	15	M15x1.0	22
AKZ20	20	48	52	10	95	58	30	56	45	75	11	17	15	M20x1.0	30
AKZ25	25	58	59	14	105	68	35	66	25	85	11	-	-	M25x1.5	35

接受表面特殊處理之訂製 Surface Special treatment is available.

FKZ 系列 (法蘭固定側徑向軸承型)
Support Unit FKZ
 (fixed-side rectangular radial bearings type)

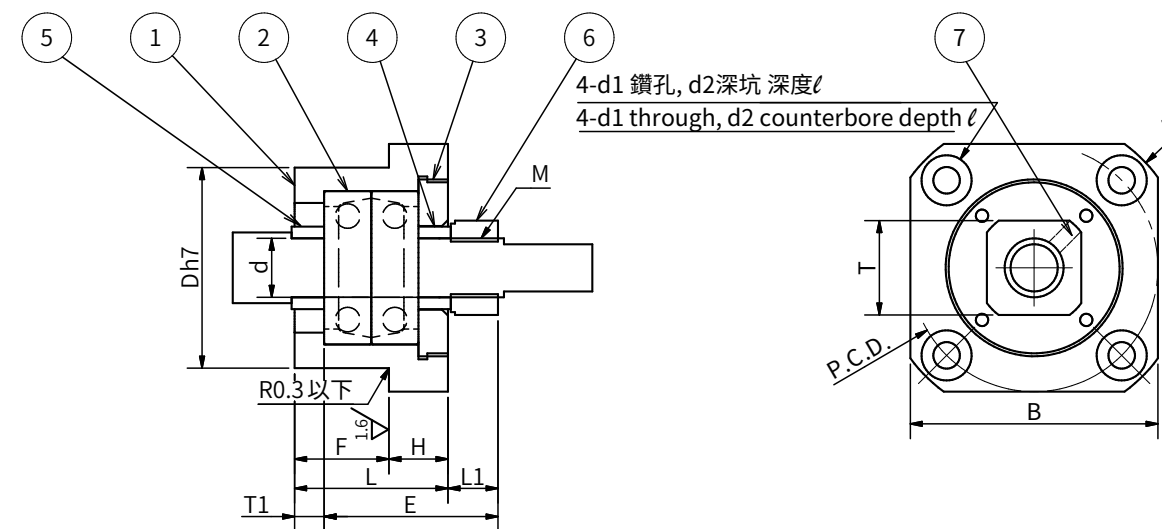
- ※轉造級滾珠螺桿適用
Rolled ball screws are suitable for use.
- ※全系列使用徑向軸承
All series adopts radial bearings.
- ※軸承已施加過預壓，轉速3000rpm以內使用
Max. 3,000 r.p.m with preload bearings.

編號/Part No.	部品名稱/Part name	數量/Qty
1	軸承座本體/Housing	1
2	徑向軸承/Bearing	1組/1 set
3	螺柱壓板/Screw Holding Lid	1
4	套筒/Collar	2
5	油封/Seal	1
6	鎖固螺帽/Lock nut	1組/1 set
7	內六角止付螺絲附銅片 Hexagon socket-head Setscrew(with set piece)	1



FKZ

※ ①②③⑤ 是一體的，請勿將其分解。
 ①②③⑤ as a whole, do not take them apart.



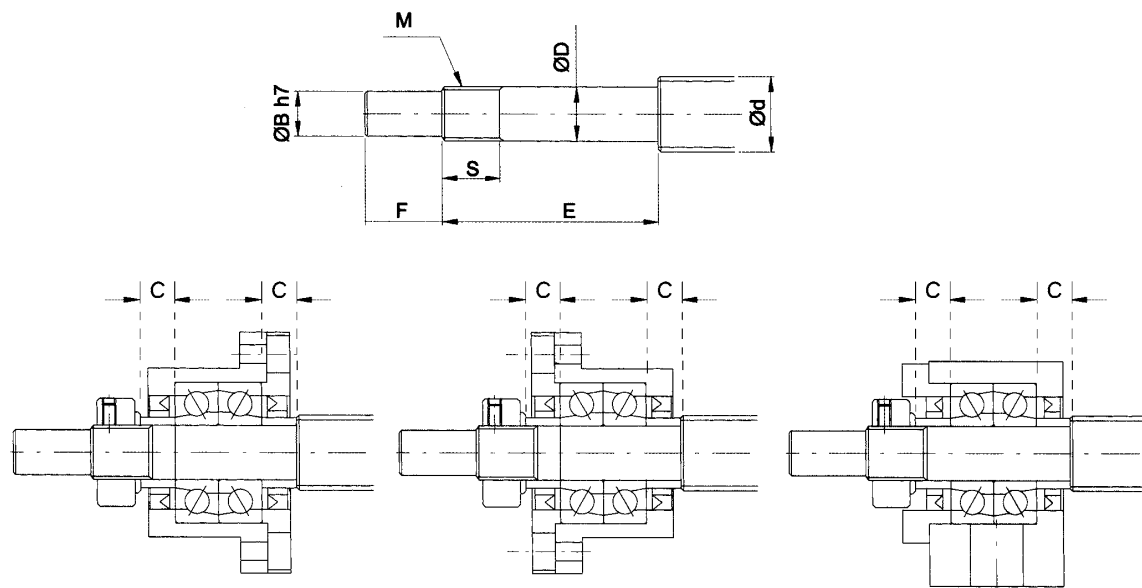
單位 / Unit : mm

型號 Model No.	軸徑 Shaft diameter d1	L	H	F	E	Dh7	A	PCD	B	L1	T1	d1	d2	ℓ	M (細螺紋)	T
FKZ06	6	20	7	13	22.5	22	35	28	28	6	3.5	2.9	5.5	3.5	M6x0.75	12
FKZ08	8	23	9	14	26	28	43	35	35	7	4	3.4	6.5	4	M8x1.0	14
FKZ10	10	26	10	16	29.5	34	52	42	42	8.5	5	4.5	8	4.5	M10x1.0	17
FKZ12	12	26	10	16	29.5	36	54	44	44	8.5	5	4.5	8	4.5	M12x1.0	19
FKZ15	15	30	13	17	38	40	63	50	52	14	6	5.5	9.5	5.5	M15x1.0	22
FKZ20	20	48	18	30	52	57	85	70	68	14	10	6.6	11	6.5	M20x1.0	30
FKZ25	25	54	24	30	59	63	98	80	79	15	10	9	15	8.5	M25x1.5	35

接受表面特殊處理之訂製 Surface Special treatment is available.

建議軸端加工尺寸 (固定側) FK,FKE,FKZ,EK,AK,AKE,AKZ 型

Recommended shaft end shape(Fixed-side)
for Support Units types FK,FKE,FKZ,EK,AK,AKE,AKZ



FK,FKE,FKZ 型
Type FK,FKE,FKZ

FK,FKE,FKZ 型
Type FK,FKE,FKZ

EK,AK,AKE,AKZ 型
Type EK,AK,AKE,AKZ

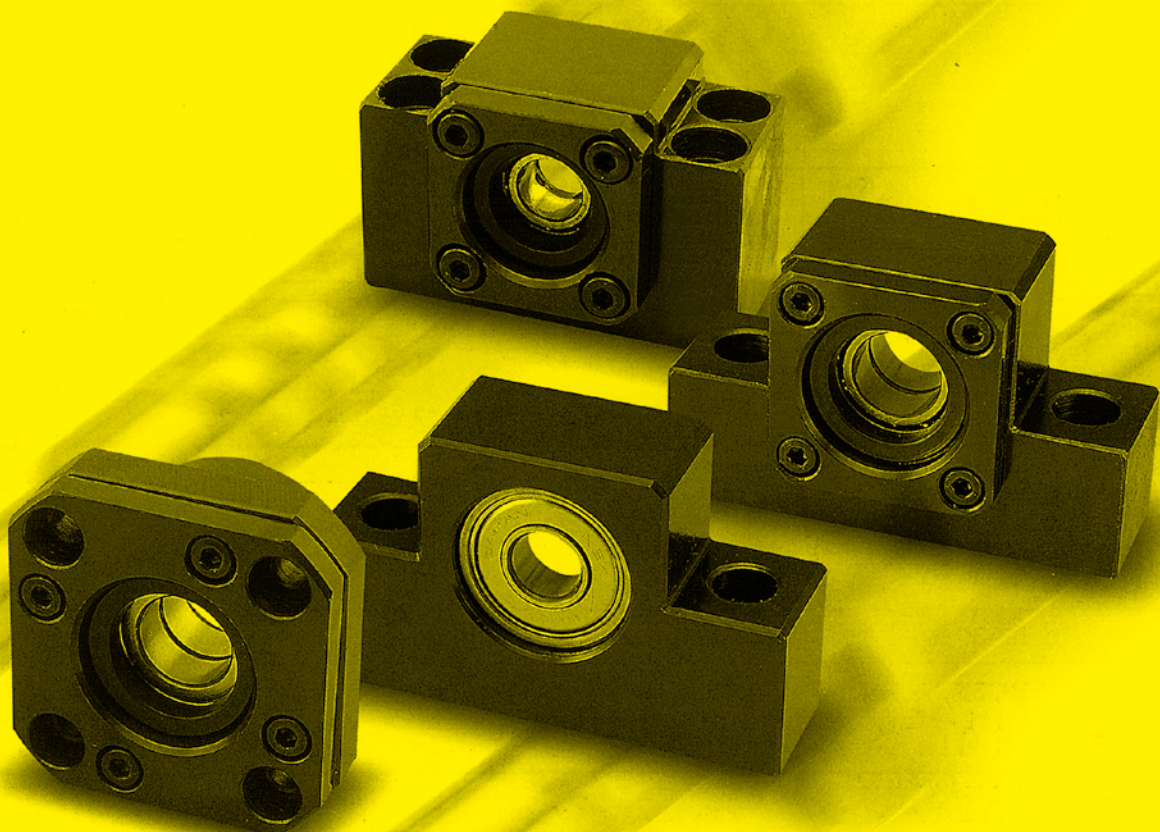
單位 / Unit : mm

型號 Support unit model No.							滾珠螺桿軸外徑 Ballscrew shaft OD	軸端部外徑 Shaft support portion OD			公稱螺紋 Metric screw thread		套筒長度 Metric screw thread		
FK型 Type FK	FKE型 Type FKE	FKZ型 Type FKZ	EK型 Type EKE	AK型 Type AK	AKE型 Type AKE	AKZ型 Type AKZ	d	D	B	E	F	M	S	C	
FK06	-	FKZ06	EK06	-	-	AKZ06	8	6	-0.005 -0.012	4	28	8	M6X0.75	8	5
FK08	-	FKZ08	EK08	-	-	AKZ08	10/12	8	-0.005 -0.012	6	32	9	M8X1	10	5.5
FK10	FKE10	FKZ10	EK10	AK10	AKE10	AKZ10	12/14/15	10	-0.005 -0.012	8	36	15	M10X1	11	5.5
FK12	FKE12	FKZ12	EK12	AK12	AKE12	AKZ12	14/15/16	12	-0.005 -0.014	10	36	15	M12X1	11	5.5
FK15	FKE15	FKZ15	EK15	AK15	AKE15	AKZ15	18/20	15	-0.005 -0.014	12	47	20	M15X1	13	10
FK17	-	-	-	-	-	-	20/25	17	-0.005 -0.014	15	58	23	M17X1	15	10
FK20	FKE20	FKZ20	EK20	AK20	AKE20	AKZ20	25/28/30	20	-0.005 -0.014	17	62	25	M20X1	17	11
FK25	FKE25	FKZ25	-	AK25	AKE25	AKZ25	30/32/36	25	-0.005 -0.014	20	76	30	M25X1.5	20	15
FK30	-	-	-	-	-	-	36/40	30	-0.005 -0.015	25	72	38	M30X1.5	25	9

低轉速-徑向軸承支撐座固定端軸向負荷參考表

Reference of Axial load of fixed-side type support units

支撐座型號 Model No.	軸承 Bearing	基本額定負荷(N) Basic load ratings		極限轉速 Limiting Rpm (RPM)	
		動額定負荷 Dynamic(N)	靜額定負荷 Static(N)		
AKZ06	FKZ06	606ZZ/VV	1335	1200	32000
AKZ08	FKZ08	608ZZ/VV	2200	2200	28000
AKZ10	FKZ10	6000ZZ/VV	4550	1960	21000
AKZ12	FKZ12	6001ZZ/VV	5100	2390	18000
AKZ15	FKZ15	6002ZZ/VV	5600	2830	15000
AKZ20	FKZ20	6204ZZ/VV	12800	6650	10000
AKZ25	FKZ25	6205ZZ/VV	14000	7850	8900



Made in Taiwan

承鈞企業有限公司

CHENG JUN ENTERPRISE CO., LTD.

高雄市小港區松華路526號

TEL : (07)8013488 FAX : (07)8011366

統一編號 : 27686145

E-mail : info@nsb.com.tw

[http : //www.nsb.com.tw](http://www.nsb.com.tw)